

# Watch this space

Steal the style of interior designers, as they reveal the secrets behind their favourite projects to **Melissa Emerson**



"I believe a good sofa is always a worthwhile investment. This model is the Freeman by Minotti London."



## Daniel Hopwood

86 Gloucester Place, W1U,  
danielhopwood.com

Daniel Hopwood completely overhauled his Marylebone townhouse apartment but discovered that being your own client can make things trickier

"The rear panel is a sort of light installation. The main part is covered in handmade paper in mottle bronze and black, with a semi-circle alcove."

"The view of St Marylebone Church from the living room is what sold the flat to me, and the views are especially beautiful at night when the city is lit up.

It's a relatively small flat with low ceilings and it hadn't been touched since 1958, so it was always going to be a challenge to make the space work.

The measured survey of the apartment sat on the drawing board untouched at first. There was always another project landing in the office that required immediate attention, and each time I glanced at the plans, I just couldn't envisage the outcome, despite it being something I do every day for others.

"The silk graphic cushions by Misa establish the colour palette for the apartment and set the tone for the subtle mid-century style."



After consulting with my team, I eventually decided on a warm and inviting gentleman's club atmosphere that played with contrasts: light and dark; rough and smooth; old and new.

The two large sliding panels with reeded glass between the living room and kitchen were inspired by the multi-purpose rooms in Japanese design. It allows me to have either an open-plan space or a warm and intimate feel."

"The '60s-style floor lamp is by Bert Frank and lights up the corner behind the Minotti swivel chair. It's the ideal location for comfortable TV-watching."

IMAGES COURTESY OF ANDREW BEASLEY

## GET THE LOOK



**OGILVY SWING ARM WALL LAMP IN MATT BLACK AND ANTIQUE BRASS, £59, MADE.COM**



**LOUNGE CHAIR & OTTOMAN IN CHOCOLATE LEATHER, £6,205, CHARLES EAMES AT THE CONRAN SHOP, CONRANSHOP.CO.UK**



**MONOLITHOS SIDE TABLE, £1,075, LUCE DI CARRARA, STORE.WALLPAPER.COM**



**JAGO RUG IN BURNT ORANGE, £199, MADE.COM**



## YAM Studios

29-31 Oxford Street, W1D, [yamstudios.com](http://yamstudios.com)

Designer Kashi Shikunova worked with a blank canvas to create this Scandi-style kitchen and dining space in a large west London new-build

“Fairfax Road is a six-bedroom, four-bathroom new-build property, set over three floors with a basement. It was completed in 2015 and featured in last year’s Open House London.

Working on a new build was great as we had the space to use big statement pieces.

The overall aim for the kitchen was to



IMAGES COURTESY OF SIMON ELDON

“The stools mirror the concept of the dining chairs and table, and were selected because of their beautiful curving form and warm wood finish.”



create a large family space that was contemporary, minimalist and stylish, with an urban feel as the basis and a Scandinavian touch to soften the scheme and add warmth.

We designed the kitchen joinery from scratch. We wanted a functional space which seamlessly integrated with the ground floor, mirroring the materials and clean lines of the connected dining and living rooms.

As a studio, we avoid the classic white box and instead use different variations of the monochrome concept. In this case, our palette consisted of concrete, warm wood tones, off-whites and greys.”



“The table works well here because its simple, elegant form complements the chairs and allows them to take centre stage.”



“We love combining wood and concrete, and highlighting their textural similarities while contrasting the industrial edge of the concrete with the natural feel of the timber. The dark polished concrete floor in this project allowed us to bring a variety of wooden elements into the space. These worked as a beautiful contrast and helped bring extra warmth and depth to the scheme.”

### GET THE LOOK



**LARGE UTENSIL JAR IN SATIN BLACK,** £32, LE CREUSET, [LECREUSET.CO.UK](http://LECREUSET.CO.UK)



**CH24 WISHBONE CHAIR IN SOAPED OAK & PAPER CORD,** £647, HANS J. WEGNER AT THE CONRAN SHOP, [CONRANSHOP.CO.UK](http://CONRANSHOP.CO.UK)



**BEAT TALL PENDANT IN BLACK,** £325, TOM DIXON, [TOMDIXON.NET](http://TOMDIXON.NET)



**BUMBLE STOOL IN SMOKED OAK,** £320 PER PAIR, LOAF, [LOAF.COM](http://LOAF.COM)



GET THE  
LOOK



**MARRAKESH  
PENDANT,**  
FROM £117,  
IT'S ABOUT ROMI,  
NOXUHOME.COM



**LUXE DIAMOND  
COFFEE TABLE,**  
£355, OLIVER BONAS,  
OLIVERBONAS.COM



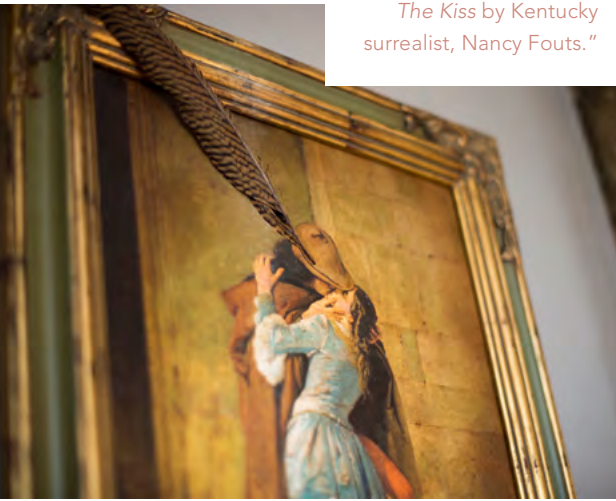
**ASTORIA ARMCHAIR IN  
CORAL VELVET, £399,**  
ATKIN AND THYME,  
ATKINANDTHYME.CO.UK



**NUZZLER  
SHEEPSKIN RUG  
IN NATURAL, £65,**  
LOAF, LOAF.COM



"You'll find many a witty vignette throughout my designs. This piece is *The Kiss* by Kentucky surrealist, Nancy Fouts."



Jo Berryman Studio

Henry Wood House, 2 Riding House Street,  
W1W, joberryman.com

Jo Berryman started out in fashion, but reveals that art was the inspiration for this feminine suite

"This master suite is a true Jo Berryman showcase. The brief was to create a feminine sanctuary within a male-strong household. It was an absolute dream to conjure up this scheme as I was in the throes of maternity with my second child and obsessed with vibrant, carnal tones.

Farrow & Ball's Charleston Grey on the walls works as a great bedrock for layering colours, while the ceiling is a soft Cornforth White.

I had introduced the client to my friend, the artist Alice Instone, and she agreed to sit for her. Alice manages to extract femininity from her sitters in a sensual yet potent way. Through her gaze, her sitters are less like subjects and more like goddesses and warriors. This boudoir came about as a direct response to that portrait.

There's not an ounce of fluff or frills in sight, yet it's unashamedly feminine."

"Wallpapers are great for adding a pop of the unpredictable. I used an antique mirror-effect paper by Cole & Son here."



IMAGES  
COURTESY OF  
SIMON WILLIAMS



"Philadelphia fabric studio, Kevin O'Brien, knows a thing or two about the craft of burnt-out silks, laces, metallics and velvets. We use them throughout many of our projects as they're so darn cool."



"These lacquered maze bedside tables (pictured left) by Birgit Israel are the most plush way to hide bedside paraphernalia."