

Livingetc

THE HOMES MAGAZINE FOR MODERN LIVING

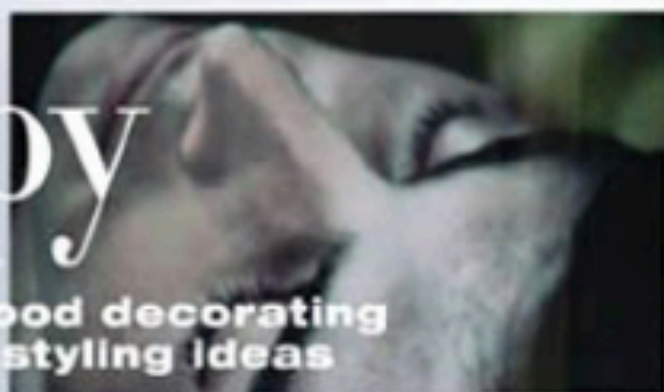
Britain's
best-selling
**MODERN
homes**
magazine

FEBRUARY 2011 £3.70
US \$4.99/AUS \$9.50/NZ \$3.95
livingetc.com

Get
happy

137

feel-good decorating
and styling ideas



**Inspired
UPDATES**

*12 clever ways to
revamp your home
in a weekend*

Shop!

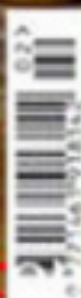
Wooden floors
Bed linen
Pendant lights
Wall tiles
Fitted carpets

**DESIGN
PROJECTS**

*Small-space solutions
Lighting effects
Beautiful bedrooms*

Modern homes

From city chic to country cool



DINING AREA

The resin antler mirror is from Bouff. Jo picked up the bird candleholder in a Berlin flea market, but An Angel At My Table sells similar. The storage jar is from Ikea.

Home profile

THE OWNER Interior and furniture designer Jo Berryman, her daughter, Nico, four, Dolly the dog and a rescue donkey.

THE PROPERTY A 16th century Cotswold-stone farmhouse. The ground floor has a kitchen-diner, vestibule, snug, living room, cloakroom and utility room. The first floor has three bedrooms and a family bathroom. The master suite is in the attic.

The cool hunter

Jo Berryman has brought together crystal-studded antlers, stylish textiles and glamorous antiques to create her vision of hunting-lodge chic

WORDS CHARLOTTE ABRAHAMS | PHOTOGRAPHY JAMES MERRELL | STYLING MARY WEAVER

LIVING ROOM

"With horses in the fields all around the house, part of me wanted to cover the walls in galloping horse wallpaper," laughs Jo. "In the end, I knew I wanted the house to feel seamless, and neutral walls allow me to be more creative with the furniture. The retro painting is just a hint of equine."

Get the look For equestrian art, see Ideas To Steal. The chesterfield is from George Smith. The cushions are from Burford Garden Company. The bureau and chairs are from Lorrards.

LIVING ROOM

'I've gone for a glam hunting-lodge feel,' says Jo of the luxurious upholstery and crystal-covered skulls over the fireplace. 'And while there is a lot of stone and the ceilings are quite low, the house never feels gloomy – I fell in love with the light the first time I stepped through the door.'

Get the look For similar chairs, go to thefrenchhouse.co.uk. The Swarovski crystal skulls are from Tann Rokka. The ottoman is from George Smith. The rug is by Tom Dixon for The Rug Company. Vivienne Westwood's Opus book is available from Kraken Opus.

'I don't have a favourite style, because I think too much of one thing looks staid.'

*What Jo did

- Installed cast-iron radiators.
- Refitted the bathrooms.
- Turned the attic into a luxurious master suite.
- Built a new kitchen around the existing Aga.
- Laid sisal on the first floor.

Jo Berryman is a self-confessed city girl with a penchant for rock 'n' roll glamour. But when she bought a 16th century farmhouse in the Cotswolds, she wanted to honour its heritage rather than impose her urban style (Jo's previous homes have featured in *Livingetc* in March 2007 and April 2009). 'I was conscious of not bringing London to the country.' Still, Jo's cottage style couldn't be further from twee...

Previously, her country home fantasy had consisted of a rambling Georgian manor, which wouldn't have been very different from her urban dream. 'Instead, I've ended up with a low-ceilinged farmhouse, complete with inglenook fireplace and beams,' she laughs. 'It is a quintessential cottage, but I love all its nooks and crannies.' The house, with enough land to house a rescue donkey, had been previously restored when Jo bought it 18 months ago. 'Thankfully, the building was in good order, so I was largely able to work with what was already here,' she says. 'It was just a case of making it mine and creating the kind of atmosphere I love.'

Her delight in the character of the house can be felt in every room. The muted shades on the walls pick up on the colours of the original flagstone floors and Jo's eclectic mix of vintage and antique furniture gives the place a lived-in mood that's ideal for the relaxed house parties she loves. 'My ideal weekends are spent here with friends, children and dogs,' says Jo. 'I cook big lunches, we play games and go walking. I do encourage everyone to put slippers on if they've been outside in the mud, but the stone floors are very forgiving and a bit of grit just adds to the experience.'

Jo, an interior and furniture designer, may have embraced the cottage-style windows, the open fire, and – after something of a stand-off – the Aga (she once left a Camembert in the warming oven and it burnt to a crisp), but at heart she's a 21st century urbanite with an eye for display and her own modern take on country cool. There's the proliferation of animal skulls and antlers, for instance – classic hunting-lodge trophies – only these skulls are jewel encrusted and the antlers are made of resin. And there's the equine theme. There are horses in fields all over the area, and their influence can be seen in every room – from the Seventies painting in the living room (it was the first thing Jo put in there) to the saddlery-inspired bed in the guest room and her own range of Matrushka tables, with soft horsehair trimmings and elegant walnut legs carved like hooves.

'It's all quite tongue in cheek, really. That's one of the joys of having a place for weekends and holidays,' says Jo. 'I can afford to be much more whimsical with the design – it suits the wonderful feeling of escape from reality I feel here.'

To see Jo's design work, visit matrushka.co.uk. The cottage is available to rent: go to thefollyluxurycottage.com to find out more. >



KITCHEN

'Now I've mastered the Aga, I love cooking here,' says Jo. A glass-roofed extension fills the space with natural light even on grey days. The Twenties butcher's block acts as an impromptu desk, prep surface and breakfast bar. Its undulating top is a mark of its age. 'We do lose the odd piece of crockery that rolls off,' laughs Jo.

Get the look The Forties cruise liner bar stools came from Alfies Antique Market. For a butcher's block, try The Old Cinema. For kitchen units, go to Howdens Joinery.

VESTIBULE

Jo wanted to make this space feel like a room rather than just an entrance, so she created a mini library with a built-in bookcase complete with ladder, chairs and a wood-burning stove for welcoming mood.

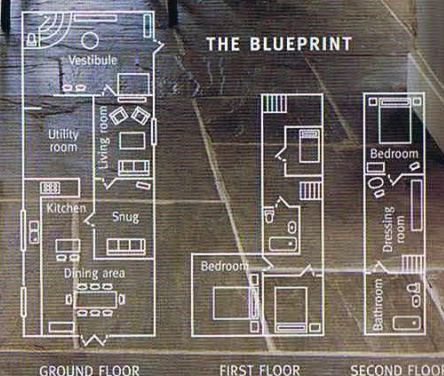
Get the look For a library ladder, go to Arch 389. The leather armchair is from Amy Perry Antiques. The sunburst mirror is from Merlin Antiques. The Pretty Polly coffee table with a horsehair fringe is by Jo Berryman for Matrushka.



DINING AREA

Blackboard paint makes a great drawing space for Nico. 'I like to create little pockets of narrative,' says Jo, 'like the dresser, which is full of trinkets we've bought locally.' The dining table is made from reclaimed wood on metal legs. 'My DIY magician friend made it,' she says. 'The long, slim shape makes it intimate and sociable.'

Get the look For a similar table, go to Elemental. The French school chairs are from Amy Perry Antiques. The dresser is from Berryman's Antiques. The mini Louis chairs are by Philippe Starck for Kartell, available at The Conran Shop.



*Home truths

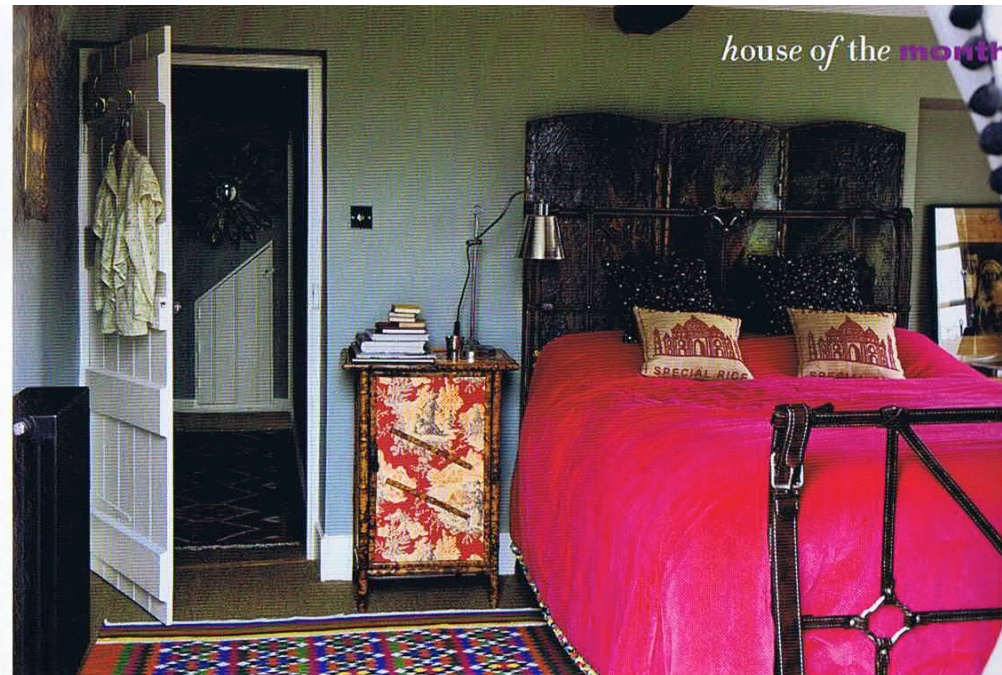
Grow-your-own or shop-bought veg? Grow my own, eventually.

What two pieces of clothing couldn't you live without? My Balenciaga jacket and a cashmere hoodie from Gap I've had for years.

Multiplex or home cinema? Home cinema hands down. You can't beat a good Criterion documentary or an elusive French film.

What's your first decorating memory? Drawing Snoopy all over my bedroom walls in crayon. I still love scribbling – hence the blackboard in the kitchen.

I'm currently saving up for... some more art by Alice Instone.



GUEST BEDROOM

'We're going mock grand and putting names on all the bedroom doors,' laughs Jo. 'This is the Beaufort Suite, named after the famous hunt.' The bed – which seems to be made from leather horse tack but is actually cast iron – continues the equine theme.

Get the look The Handel bed is from And So To Bed. The bedspread is Butterfly by Matthew Williamson at Debenhams. The cushions are from Graham & Green. The cabinet is from Merlin Antiques. The lamp is from John Lewis. The screen is from Lorfords.

JO'S BEDROOM (left and right)

The attic has been transformed into a boutique hotel-style suite. 'It's a real retreat,' says Jo. 'The mood is *Boogie Nights* meets Marie Antoinette. I wanted it to be decadent and sexy with a touch of humour.'

Get the look The Chateau bed is from Graham & Green. The painting above the bed is from Fandango. The cushions are from Liberty. The throw is Armani Casa. For a chandelier like this, go to Sweetpea & Willow. The chair is from Amy Perry Antiques. The marble table is from Alfies Antique Market. Jo made the lamp using a tripod from Muir Antiques. The masked lady painting is from Obscura Antiques in New York; the painting above is from Top Banana Antiques. For a paint colour like this, see Ideas To Steal. >



BATHROOM

A slipper bath under the beams creates a look that's pure rural romance, while a hint of buttoned leather adds sexy, urban style.

Get the look The bath is from Catchpole & Rye. For a similar mirror, go to thefrenchhouse.co.uk. Heal's sells buttoned-leather pouffes.

*Livingetc loves

- Jo's modern-luxe take on country style – buttoned sofas, flea-market furniture, unexpected artworks and those crystal antlers add up to a style that's far from twee.
- The idiosyncratic kitchen. The Aga may be temperamental and the butcher's block so worn that things slide off, but along with the blackboard-painted wall they give the kitchen an individual twist.
- That the equine theme runs throughout the house. From Jo's own Pretty Polly coffee table with horse-hair fringe and hooves for feet, to paintings and lamps.

CLOCKWISE FROM ABOVE
Fight Me Antler chandelier,
£745, The French Bedroom
Company. Mr Bright chair in
Gold Leaf, £899, John Lewis.
Garra chestnut extending
table, £800, Laura Ashley.



KEY SURFACES OF THE HOUSE

(From top) Jewelled Creek 2
emulsion, £19.49 for 2.5l,
Dulux. Oak Reclaimed
Look 1 flooring, £142.80
per sq m, Solid Floor.
Cornforth White estate
emulsion, £29.50 for 2.5l,
Farrow & Ball.



FROM ABOVE LEFT *Andalusian
Stallion* artwork, £75, Lydia
Kiernan. Agadir rug, £368,
Anthropologie. Henrietta bed,
£1,895, Feather & Black.



IDEAS TO STEAL from Jo's house

Embrace cottage
meets baronial
style with antlers,
deep colour and
equine moments

house of the month

URN RESPECT

Jo has created a real statement basin
by converting a giant garden urn.
The basin is simply sunk into the
urn and sealed with silicone, while
the plumbing is neatly concealed
inside with a small outlet at the back.
Buy an urn with a pre-drilled hole from
Pots and Pithoi. For a similar metal
basin, look at the Morgen from Fishke.



ONLINE EXTRA

For hundreds more inspiring homes packed
with ideas to steal, visit livingetc.com/houses.

For stockist details, see page 141