

# ABSOLUTELY

SEPTEMBER 2013  
£3.95

## NORTH BY NORTHWEST

AW13  
**TREND  
REPORT**

**DARK  
NOTE  
RISES**

LYN HARRIS TALKS  
SEDUCTIVE SCENTS

LUSH  
LODGINGS  
INSIDE MATRUSHKA'S  
TOP PROPERTY

NORDIC  
BUT NICE  
STYLE INSPIRATIONS  
FROM SKANDIUM

*Fresh*  
**Faced**

Fashion's new romantic mood

STYLISH. INTELLIGENT. ELEGANT. ABSOLUTELY

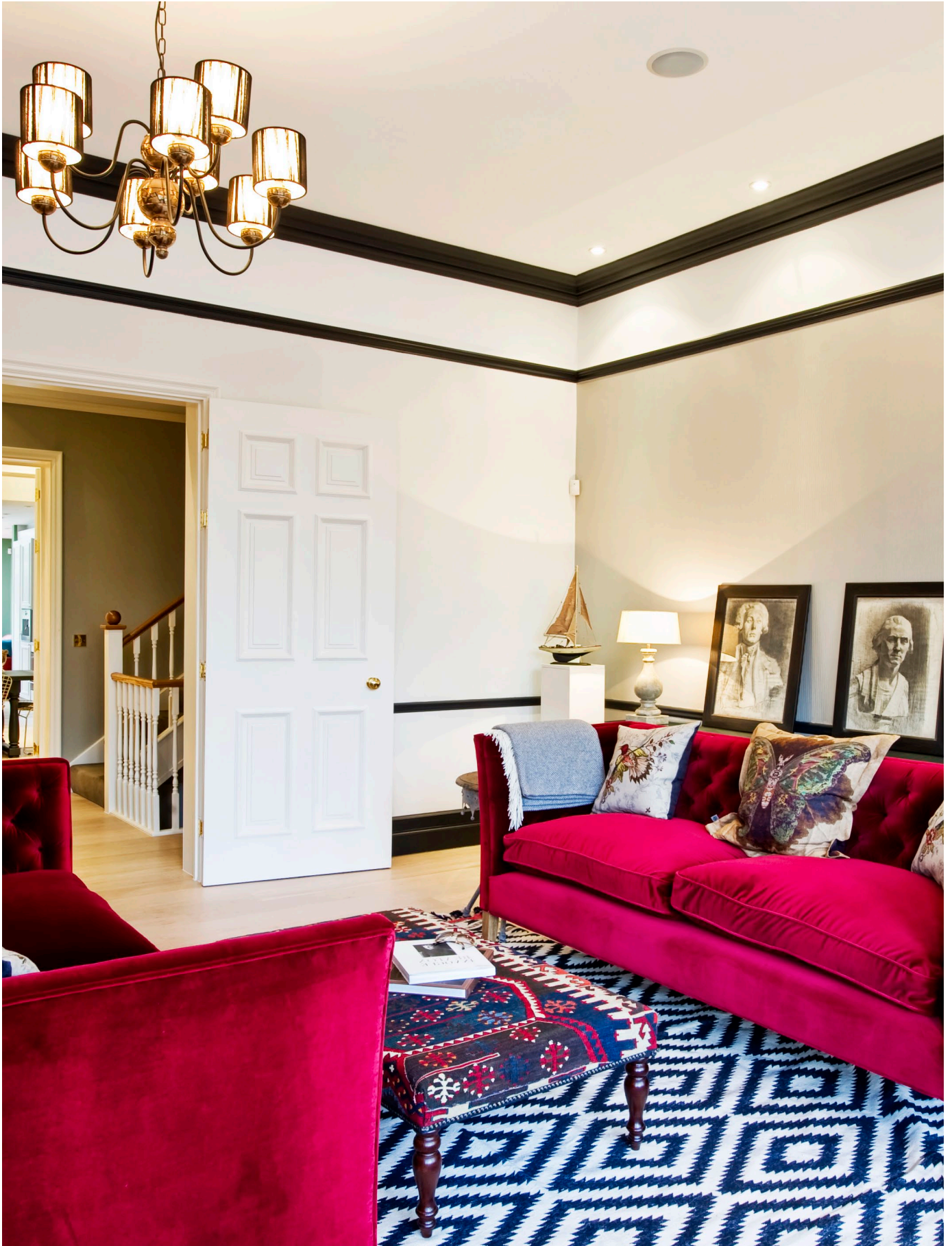




# *P* PERIOD *Piece*

Interior design consultancy **Matrushka** redefines a tired Edwardian mansion in Hampstead. *Absolutely* takes a tour...







# Absolutely INTERIORS



## What was the first thing you thought when confronted with the space?

It was in need of some serious enlivening and spatial definition. I was impressed by its handsome proportions and the original windows in the main reception area.

## Do you approach period houses in the same way or is every property a different story?

Every property evokes a varied response from me. I'm often inspired by the raffish splendour of a crumbling period property yet am open to working with a modernist box on a cliff.

## Do you have a favourite era in architecture or design? I'm having a 1970s moment right now, though I don't profess to be loyal to any particular era or movement, I find that too limiting

## How do you add a personal touch – what are the owners like?

Curating anglocentric pieces for them and incorporating existing objects and family heirlooms into the scheme. The overall design had to appeal to a professional, US based couple who were keen to inhabit a quintessentially British space.

## What would be your dream residential job?

A Muscovite's urban palace or a surf shack retreat in Costa Rica.

## How do you stay one step ahead of the latest interior trends?

I try to teeter on the periphery of trends, drawing inspiration from art and nature. My current art obsessions are: Michael Landy's *Saint's Alive* exhibition at the National Gallery and my dear friend Alice Instone's use of carnal blush tones.

## What style do you prefer for your own home?

functional decadence interspersed with pockets of whimsy

## What area of london do you live in and why?

Hampstead because of the heath, the schools, the dickensian lamp posts and a pint of prawns at the holly bush pub.

## What constitutes good design for you?

For me it's all about creating a durable structure and canvas allowing for brazen accents and changeable layers.

Matrushka HQ, 4 Willoughby Road, NW3;  
[matrushka.co.uk](http://matrushka.co.uk)



Aston Kutcher and Mila Kunis rented the house while filming in London