

THE HOMES MAGAZINE FOR MODERN LIVING

Livingetc

OCTOBER 2016 / £4.40 US \$9.99/AUS \$9.95/NZ \$11.50

At home with DESIGN

EXCLUSIVE!

ANGELA MISSONI'S
MILAN RETREAT
PLUS: DANIELLE BUX'S
LONDON PAD

**AUTUMN'S NEW FABRICS
AND WALLPAPERS**

**KITCHENS
OF THE FUTURE**

Discover the latest
trends and looks

SPOTLIGHT ON LIGHTING
BEDROOMS, BATHROOMS
AND BEYOND...

PURE STYLE



RECALL: 5/10/2016

STAR

Danielle Bux's London home is as glam as a Hollywood remake, with

QUALITY

sensual contrasts, atmospheric lighting – and some damn fine one-liners

HOME PROFILE

THE OWNERS Danielle Bux, an actress, and her daughter Ella, 14, plus Snoop the Labrador. It's also home to her ex-husband, broadcaster Gary Lineker, with whom she remains on good terms, and his four sons.

THE PROPERTY A four-storey house in southwest London. The lower-ground floor includes a cinema room, bar/living area, gym, steam/shower room and a guest bedroom. On the ground floor is the living room, study, kitchen-diner/family room and a WC. The master bedroom, dressing room and en suite are on the first floor, while upstairs is Ella's en-suite bedroom and two guest bedrooms, both en suite.

HALLWAY

'I hate brand new – I wanted this floor to look properly weathered and worn,' says Danielle. 'I got the builder whacking it with chains and told the removal men, "Scratch it all you like!"'

Get the look The vintage cinema seats are from Elemental. The side tables are from The French House. The pendants are from Cristobal London. The glazing is by Robin Cooper Stained Glass.

LIVING ROOM

'Gary already had this painting when we met,' says Danielle. 'The house's interior style is worked around things we previously owned, or chose together.'

Get the look The painting is by Bo Yun. This is a bespoke Talay sofa by Amy Somerville. This is the Feathers rug by Alexander McQueen for The Rug Company.

Photography/Paul Massey * Production/Mary Weaver * Words/Jo Leavers

in her private life



FAMILY ROOM

'This is where we usually hang out,' says Danielle. 'We compete for the best spot on the window seat – and usually Snoop jumps up too. It felt important to retain the house's architectural style, so this is the original fireplace, but mixed with more edgy brickwork, worn leather and *Mad Men*-inspired shapes,' she adds.

Get the look The bespoke banquette, upholstered in Howe leather, is by Jo Berryman Studio. The neon artwork is from Gods Own Junkyard. The mid-century chair was re-covered in a Pierre Frey fabric.

Danielle Bux is far from being a drama queen. In fact, she's disarmingly down-to-earth. But in her home, she can't get enough theatrical flourishes. 'I wanted this house to feel like a stage – with all the old-school glamour that suggests,' she says. Right from the entrance hall, with its dazzle of Deco glass, floor-to-ceiling velvet curtains, serious chandeliers and the dusky gleam of bronze, the house announces that the play's the thing. That's before you even reach the cinema room with bar (whisky sours, optional) and its stretch-out crimson armchairs that rival a director's suite for double-bill comfort. Yes, each space of this family abode whispers 'glamour' as seductively as a Forties *femme fatale*, but with a modern-day dash of Danielle's own personality.

The house is home to Danielle, her daughter Ella, her ex-husband Gary Lineker and his four sons. 'I'm still stepmum to his boys and he's still stepdad to Ella, so this remains a family home for all of us,' she says simply. 'People seemed so shocked that we still get on, but I don't know how else we would behave, except as decent human beings. Gary's my best friend.'

It's that straightforward, no-messing attitude that helped bag Danielle this property in the first place. 'I'd admired it from the outside for ages,' she recalls, 'but the agent told us that it was complicated – it was divided into four flats, so it wasn't likely to come on the market for a few years.' Instead, she and Gary did up a place a stone's throw away. They had barely moved in when the agent called to say that this house had unexpectedly come up. 'I couldn't believe the timing,' says Danielle. 'Gary's immediate reaction was, "Forget it – we've already found somewhere"'. But the agent and I talked him around. It was a dream house and too good an opportunity to miss.'

Danielle had bought and done up several houses since Ella was a baby, so was less fazed by the prospect of another move, but even she lost heart when the build dragged on and on. 'The renovators were complete perfectionists, but in the end, I just booked a removal van, turned up and said, "Okay, you'd better finish up and leave now..."'

To translate her glam vision for this house into a reality, Danielle called upon the skills of interior designer Jo Berryman. 'I just loved her style – and the fact that with Jo, nothing is generic,' she says. Right from the beginning, Danielle and Jo were 'on the same page'. *Mad Men* was an initial inspiration, says Danielle – 'we both loved the casual glamour, the textures, the moody sense of drama'. Jo also brought artistic influences into play; the colours of the dressing room are reminiscent of Paula Rego's atmospheric paintings and sexy painterly pinks dance around the master bedroom.

Tactile textures, from velvet to soft leather, and deliciously dark shades of teal and sea green are a flowing undercurrent to this home. Skirting and window frames in darkest grey – which Danielle and Gary had spotted at the Chiltern Firehouse – also flicker through the spaces, like black trim on a reel of film. 'Jo's approach is always creative,' says Danielle. 'The way she interprets a space is more like an artist than an interior designer.'

Jo Berryman called in lighting and furniture from New York and rugs from Istanbul for a unique feel, as well as integrating pieces that Danielle and Gary had chosen for their previous home. You get the feeling Jo and Danielle had a blast together. 'Gary wanted to be quite hands-on too, but we tended to take the mickey and send him off to make coffees,' Danielle confesses. 'To be honest, he did have some good ideas – like rejigging the dressing room and the master bathroom – but we weren't going to let on!'

The result of this collaboration is a look that's glam, but knows when to stop – and that's just short of flashy. Part of the trick, says Danielle, is choosing antique and vintage over shiny and new. 'Things that have lived a little are much more attractive to me. Gary says maybe that's why I like older men too...' she quips.

Danielle currently divides her time between here and LA, where she's working on several screen projects (under wraps for now). 'LA is fiercely competitive, but oddly, it feels like a more level playing field,' she says. 'Here, I was always an easy target – "Oh, she's just Gary Lineker's wife".'

Her dramatic home has the odd twist in the plot as well, such as Gary's steely-eyed portrait hanging in the downstairs loo. 'Yes, ours is an unconventional arrangement,' Danielle admits. 'Things might change, but for now, it works. And, hey, who wants to be conventional?' To see more of Jo Berryman Studio's interior design portfolio, visit joberryman.com

HOME TRUTHS

In a former life, you'd have been... A gypsy. There's definitely some Roma in my distant bloodline and I love to wander.

What's your current box-set addiction? *Peaky Blinders* – now there's a dream role!

Who's the cook? We both are, but I just chuck things in a pan and season to taste. Gary does it like a training session – recipe, check; ingredients, check. He even sets a stopwatch.

What's your latest style crush? Venetian lace curtains. They're magical against rough brickwork – think less Hyacinth Bucket, more Stevie Nicks.

And the best party you've hosted here? Last Halloween, we turned the house into a Tim Burton wonderland. The props included artificial limbs – until Snoop carried one off in his mouth.

Stage or screen? I love the visual aspect of film – and the storytelling reaches a wider range of people.

CINEMA ROOM

The Electric Cinema-style seats are where Gary or his sons have film nights. 'The feel here is old-school Hollywood glamour,' says Danielle. For parties, the chairs get moved out to create one enormous space.

Get the look This is Andrew Martin's Gallery wallpaper in Charcoal. These are sofa.com's Sunday armchairs.

BAR AREA

'And this... is the Man Cave,' says Danielle. Gary and his sons head down here for table tennis and film nights with friends. The jukebox was a birthday present from Danielle to Gary. 'He kept saying he was rubbish with digital technology, so I said, "Well, you can press a button, can't you?"'

Get the look The Wurlitzer jukebox is from Selfridges. The bespoke chartreuse wall covering is hand-rendered. The rug was sourced in Istanbul.

KITCHEN

'I was determined to get a bronze worktop for the island,' says Danielle. 'I'm just waiting for it to get properly scratched up – the more marked it gets, the better it's going to look.'

Get the look This is a Plain English kitchen with a bespoke bronze worktop. The range cooker is by Wolf. The stools, upholstered with Howe leather, are by Jo Berryman Studio. The pendants were sourced online at vraitmentbeau.com.



‘I like surfaces that are well worn and a bit bashed-up – nothing too perfect’

MASTER BEDROOM

Luxe textures meet glam pastels in this feminine space. 'I saw this fabric in New York and had to have it,' says Danielle. 'Pink comes with so many connotations, but it's a fantastic colour.'

Get the look The curtain and cushion fabric is by Kevin O'Brien Studio. The bed was re-covered in silk by Jo Berryman Studio. This is a Zoffany wallpaper.



MASTER BEDROOM

A Deco-style pendant ups the glamour factor by another notch. **Get the look** The pendant is from LA-based HD Buttercup. The Seventies coffee table is from August Interiors. This is an Alpaca rug by The Rug Company.

'Gary's in touch with his feminine side, so he didn't mind me going all-out for shades of luscious pink'



DRESSING ROOM

'There's a feel of drama and staginess in here that I love,' says Danielle.

Get the look The bespoke cabinetry by Jo Berryman Studio is painted in Castle Grey estate eggshell, part of Farrow & Ball's archived colours. This is Restoration Hardware's Wells Clear Crystal chandelier.

See more great houses at housetohome.co.uk/house-tours



CLOAKROOM

Mr Lineker keeps a watchful eye on proceedings, the gleam in his eye matched by the wallpaper Danielle bought at a Damien Hirst exhibition.

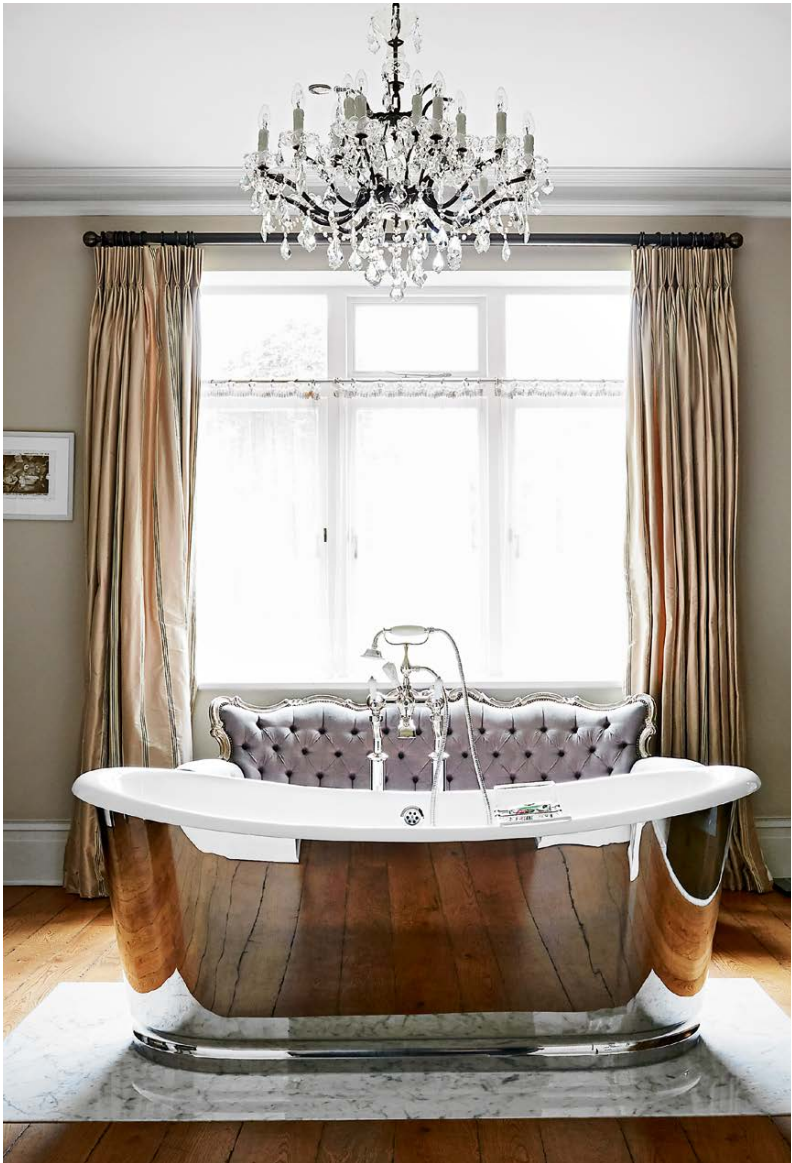
Get the look The photograph of Gary was taken by Nadav Kander for GQ magazine. This is Damien Hirst's Pharmacy wallpaper.



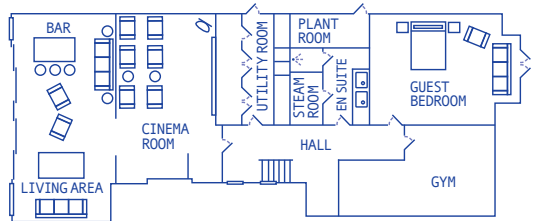
MASTER EN SUITE

Reflections, shimmer and sparkle define this luxe bathing space.

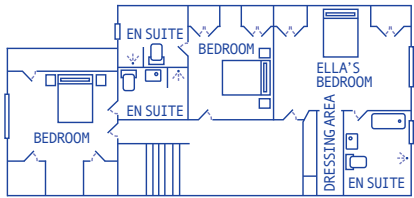
Get the look This is Catchpole & Rye's double-ended Le Bain de Bateau bath. The fittings are also by Catchpole & Rye.



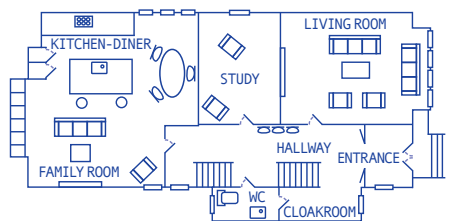
THE BLUEPRINT



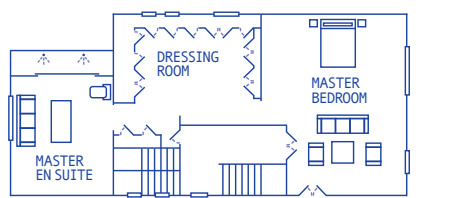
LOWER-GROUND FLOOR



SECOND FLOOR



GROUND FLOOR



FIRST FLOOR

STYLING ASSISTANT THEA BABINGTON-STITT
FOR CONTACTS, SEE LIFESTYLEETC.CO.UK/STOCKISTS